

**This visual story is intended to help prepare you for your visit to Sadler's Wells East.**



**This is one of the main entrances to Sadler's Wells East which is located on Stratford Walk, Queen Elizabeth Olympic Park, London.**



**This is the first entrance you'll see walking from Stratford Westfields.**

**You'll enter through these glass doors which open out to our Café, The Well.**





**This is The Well. You can relax here before, during and after the show and buy snacks and drinks at the bar.**

**You can also refill your water bottle at our water station, we have cups you can borrow too.**





**You might also like to enter through these glass doors. This entrance is what you'll see if you walk from West Ham Stadium.**

**There is a ramp to this entrance.**





**You will enter our Foyer and see our Welcome Desk.**

**This is where you may come to buy or collect your tickets for the show, and where our team can answer any questions, you might have.**

**You can also buy some merchandise from our shop.**



**To the right of the Welcome Desk is our restaurant and bar, The Park.**

**You can buy a snack, drink or sit down for a meal before, during or after the show.**

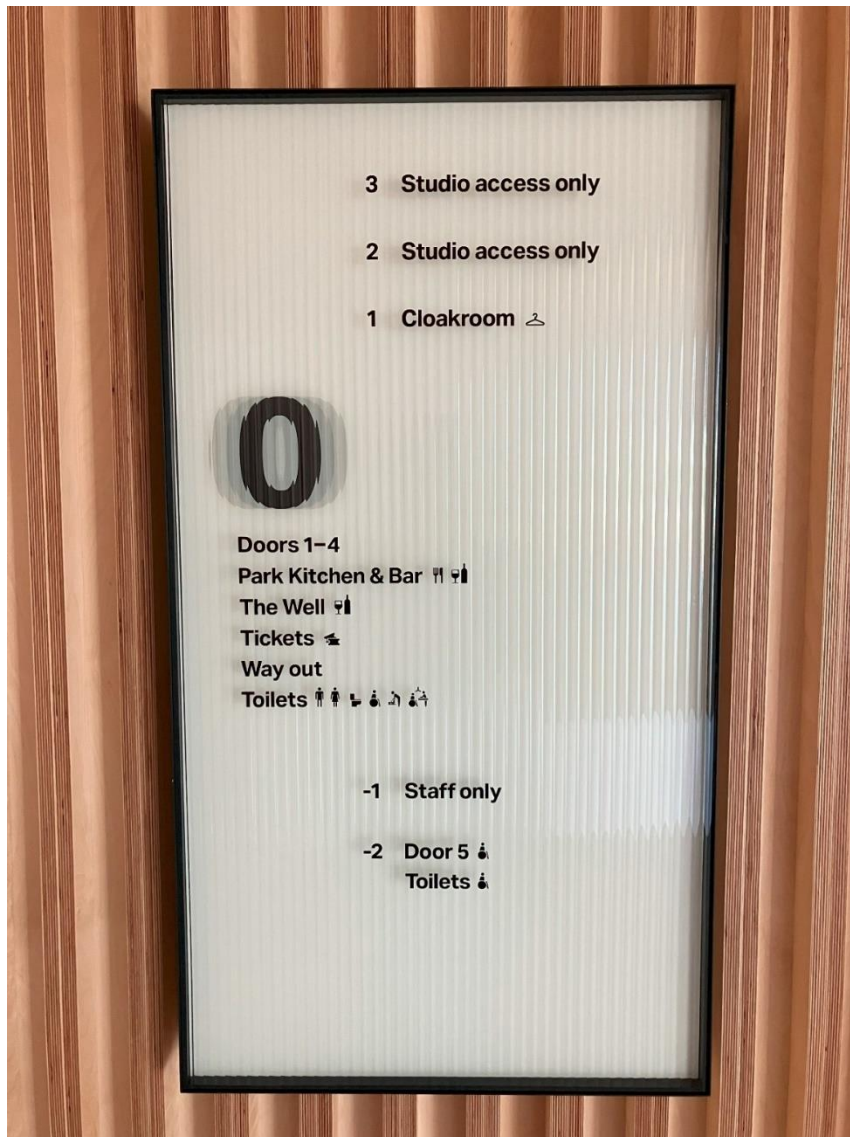
**There is another water station with cups here.**





**All our front of house spaces are connected by The Dance Floor.  
You might see people dancing here and you could hear music.**

**It might be busy and a bit noisy before and after the show.  
Candoco will have an access table in this space; you can ask them  
any questions you have about the show.**



**On the ground floor, marked 0, we have a range of toilets:**

**A female toilet with cubicles and baby change facilities**

**A male toilet with urinals, cubicles and baby change facilities**

**Two accessible, all gender toilets – one with baby change facilities**

**One changing place toilet which has an accessible toilet, adjustable changing and shower table, electric hoist and adjustable sink - please bring your own sling if you wish to use the hoist**





**Members of our front of house team will operate the lift if you need step free access the auditorium via level -2, our chill-out space on level 2 or our cloakroom on level 1.**



**The chill-out space will be in a place called The Legendary Twins Studio. It will have bean bags, fidget toys, information booklets about the show and a live stream of the performance on a large TV screen, so you can experience the show in a different way. The lights will be dimmed, and it will be quiet.**

**This performance is relaxed, which means you can exit and re-enter the auditorium as many times as you need. The chill-out space will be open from 18:30 until the show ends.**





**On level 1 we have a cloakroom where you are welcome to leave your bags and belongings for a small fee.**



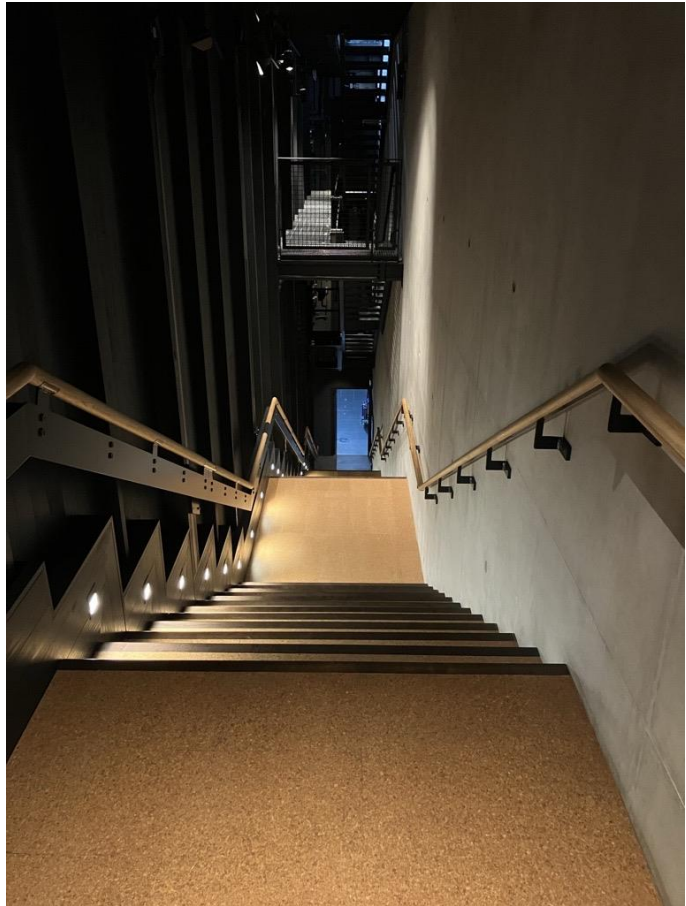
**The auditorium doors are  
either side of The Well Café  
on level 0.**



**Your tickets will be checked  
by a front of house member  
at the entrance to the  
auditorium, your ticket will  
tell you which door is best  
to use.**



**These are the stairs you  
might take if you are seated  
in rows AA-G.**



**These are the stairs you  
might take if you are seated  
in Rows H-R.**





**Seating for this performance is allocated; our ushers will check your ticket and help you find your seat. Your seat number is on your ticket.**

**There will be some unreserved bean bags near the stage if this type of seating is more comfortable for you.**

**The house lights will be on slightly, so you can leave and enter the auditorium safely whilst the performance is happening.**

**We hope you enjoy the show!**