

72	
71	
70	
69	
68	
67	
66	
65	
64	
63	
62	
61	
60	
59	
58	
57	
56	
55	
54	
53	
52	
51	
50	
49	
48	
47	
46	
45	
44	
43	
42	
41	
40	
39	
38	
37	
36	
35	
34	
33	
32	
31	
30	
29	
28	
27	
26	
25	
24	
23	
22	
21	
20	
19	
18	
17	
16	
15	
14	
13	
12	
11	
10	
9	
8	
7	
6	
5	
4	
3	
2	
1	

300—TRACKED BLACK FLATS
 200—BLACK HEADER
 100—HOUSE TABS (PERM)

GET IN RAMP
 20' W. RAISED POSITION ONLY
 CLEAR WIDTH 2600mm
 HEIGHT 5150mm

TO DRESSING ROOM
 AND UNDERSTAGE CROSSOVER

7540mm from floor to bar

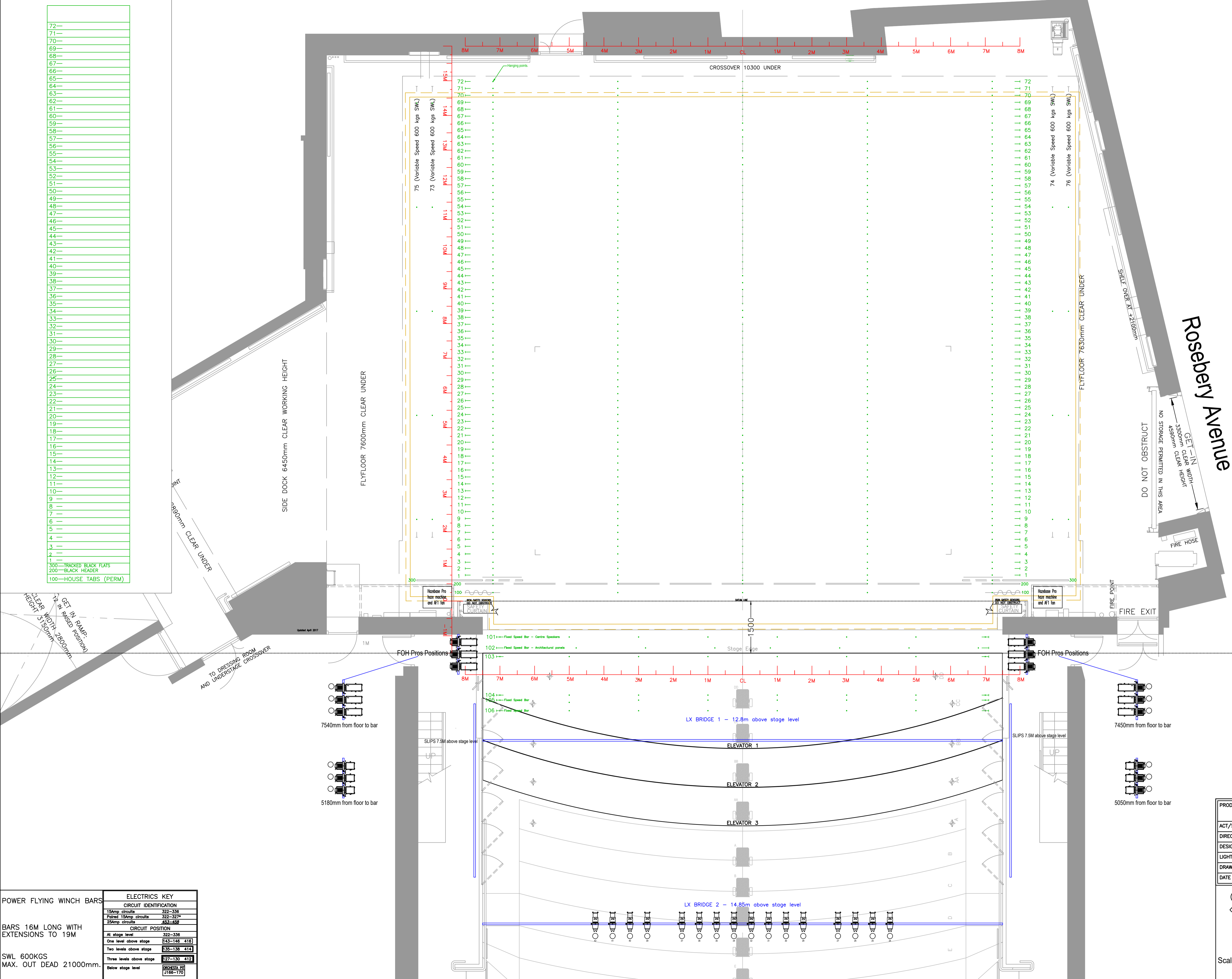
5180mm from floor to bar

POWER FLYING WINCH BARS

BARS 16M LONG WITH
 EXTENSIONS TO 19M

SWL 600KGS
 MAX. OUT DEAD 21000mm.

ELECTRICS KEY	
CIRCUIT IDENTIFICATION	
15amp circuits	322-336
Paired 15amp circuits	322-327*
25amp circuits	453-458
CIRCUIT POSITION	
At stage level	323-336
One level above stage	143-146 418
Two levels above stage	138-139 414
Three levels above stage	127-130 412
Below stage level	116-117



All lighting stock in addition to FOH lighting as indicated on plan

SWT LX Symbols	Stock
	ETC Source 4 750w (105 bodies) 20 x 14 deg lenses 50 x 19 deg lenses 60 x 26 deg lenses 50 x 36 deg lenses 20 x 36 deg EDLT lenses 30 x 50 deg lenses (including FOH stock)
	Source 4 LED Series 2 Lustr (30) Compatible lenses above
	Source 4 LED Series 3 Lustr XB (20) Compatible lenses above
	Robert Juliat 6115x 11"-26" (24) (including FOH stock)
	Robert Juliat 6135x 28"-54" (24) (including FOH stock)
	Robert Juliat 310 1.2kw Fresnels (8"-53") (50)
	Robert Juliat 329 2.5kw PC (7"-49") (30)
	Strand Pollux 5kw (2)
	Strand Bambino 5kw (4)
	Robert Juliat CIN'K 350 LFL 5KW (2)
	Par64 1kW (40)
	GLP Impression X4 Bar 20 (16)
	Source 4 LED CYC Series 2 Lustr (22)
	Selecon Flood (7)

All SWT Symbols are Dynamic blocks with visibility states.

PRODUCTION		
ACT/SCENE		
DIRECTED		
DESIGNED		
LIGHTING		
DRAWN BY	PLAN NO.	NO. OF PLANS
DATE	REVISION	

Sadler's Wells
 Rosebery Avenue London EC1R 4TN

STAGE PLAN

Refer to layer key at left for information included
 Scale: 1/50 at A1

