



Sadler's Wells

SADL
ERSW
ELLS

Artist Development Programme Care Guide

This document has been designed to support artists attending Sadler’s Wells to participate in initiatives as part of the Artist Development Programme.

We want to create a supportive environment for artists to do their best work and understand that some people require more information about the context they’ll be working within. This document is for anyone who would like to know more.

We hope the information offers a comprehensive picture of what you need to plan your visit. If there is anything else we can support with, please contact the team by e-mail at Artist.Development@sadlerswells.com.

Contents

How to get to Sadler’s Wells 2

The Fox Garden Court Café 4

The Lilian Baylis Studio 7

The Studios..... 11

Chill-Out Rooms & Safer Spaces..... 15

How to get to Sadler's Wells

The best way to get to Sadler's Wells in Angel is to use public transport. Please find more information below or visit the [TFL Journey Planner at this link](#).

Bus

Bus numbers 19, 38 and 341 stop directly outside the theatre at Stop UB northbound or Stop UC southbound, both for "Sadler's Wells Theatre".

Tube & Train

ANGEL (Northern Line City Branch) is a 300-metre or 4-minute walk from Sadler's Wells. Trains run every few minutes Northbound via Kings Cross and Euston, and Southbound via Bank and London Bridge. There is no step-free access at Angel.

FARRINGDON (Thameslink, Elizabeth, Circle, Hammersmith & City and Metropolitan lines) is a 0.7 mile or 15-minute walk from Sadler's Wells. This station has step-free access to all platforms including level boarding to Thameslink trains. From Farringdon station Stop A you can also take the 341 bus for five stops to Stop UB "Sadler's Wells Theatre".

KING'S CROSS / ST PANCRAS (national and international rail services, Thameslink, Circle, Hammersmith & City, Metropolitan, Northern, Piccadilly and Victoria lines) is a one mile or 20-minute walk from Sadler's Wells. This station has step-free access. From King's Cross station Stop E you can also take the 205 or 214 bus for five stops to Stop H "Angel Islington / City Road", a 250-metre or 3-minute walk to Sadler's Wells.

Bicycle

There are bike racks outside and opposite the theatre, and several cycle hire stations nearby. You can find out more about [TFL Santander Cycle hire online here](#).

Car

If you're coming by car, the easiest route is from Pentonville Road into the west side of Claremont Square and down Amwell Street. Here are the nearest [public charging points](#) for electric cars. There is not a public car park at Sadler's Wells so please use [Parkopedia](#) or similar to find something suitable nearby.

There are a limited number of disabled parking spaces at Sadler's Wells for those with access needs. Spaces need to be booked in advance and are limited. Please contact the team by e-mail at Artist.Development@sadlerswells.com if you require a space for your visit.

Disabled parking is in a car park at the back of the theatre off Arlington Way next to The Shakespeare's Head pub. The postcode is EC1R 1XA. When you arrive at the car park, the gates will open automatically if your space has been booked in advance. If they do not, please press the call button.

Outside Sadler's Wells in Angel



Image description: The front entrance to Stage Door Sadler's Wells on Rosebery Avenue. There is a blue sign that reads 'Lilian Baylis, Stage Door & Café' above large automatic sliding doors. There are two red telephone boxes on the left side and three men are chatting beside a bin on the right side of the image.

When you arrive at Sadler's Wells, please use the Lilian Baylis, Stage Door & Café entrance.

Go through the sliding doors towards the Stage Door Reception and Café. Please sign-in at Stage Door Reception, which is directly in front of you when you enter the building. There will be a clip board containing the Security List for your session where you can tick next to your name. The Receptionist will then be able to direct you.

The Fox Garden Court Café



Image description: The Fox Garden Court Café. A fridge with sandwiches, beers and soft drinks sits on the right side. The long silver and black café counter stretches across the room. The counter is approximately 1 metre high. Bright spotlights are dotted on the ceiling and the floor is cream-coloured tiles. There are chairs and tables on the left side, opposite the café counter.

Turn right past Reception and into the Fox Garden Court café. Café opening times vary and will be confirmed with you in advance.

Here, you can buy food and drink. You will receive a 20% discount on food and non-alcoholic beverages. We will send you a discount card by e-mail in advance of your visit, which you will need to show to the café staff to receive your discount. If you bring your own reusable cup, you can buy hot drinks for just £1!

The food selection varies with hot vegetarian and meat options available, as well as sandwiches, salads, soup, crisps, nuts, and cakes. A standard hot meal will cost between £8 - £14 (before discount). There is a tap in the dining area where you can help yourself to a glass of water or refill your bottle. Hot water is available for free by asking the café staff. You can use cutlery if required but we kindly ask that this is returned to the café counter after use.

Please note that there is no access to a microwave, fridge, or a kettle at Sadler's Wells.

Depending on the day and time, the café may be busy and noisy with lots of people eating and drinking, particularly if it's dinnertime and before a show.

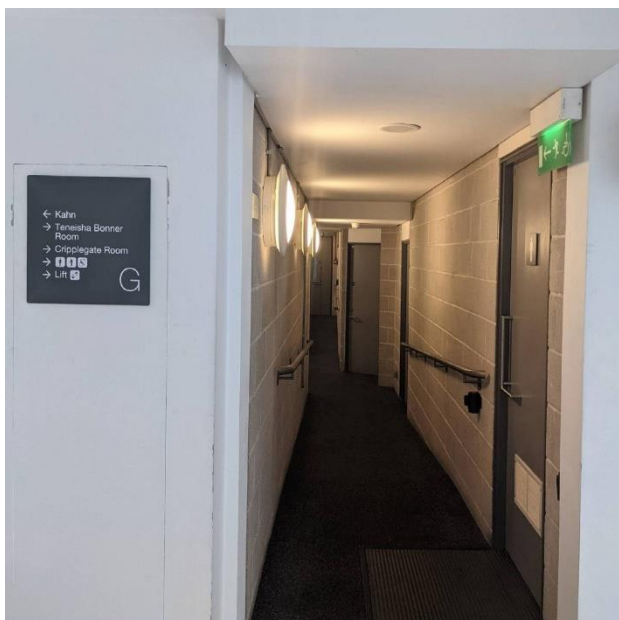


Image description (LEFT): A long corridor with grey doors and handrails on the wall. A grey guide with directions in white writing is on the wall on the left side.

Image description (RIGHT): A grey door with a wheelchair symbol and the letters WC on the door. A square silver button is on the wall on the right side which can be pressed to enter the toilet.

You can find toilets by following the corridor through the café. We have a gender-neutral accessible toilet and separate toilets for women and men.

There are also baby-changing facilities available in the accessible toilet. Please note that breastfeeding is welcome in all areas of Sadler's Wells.

The Lilian Baylis Studio



Image description: Two grey double doors with silver handrails and small vertical rectangular windows. A blue wall is on the right side with a blue sign with white writing that reads 'Lilian Baylis Studio'.

You can access the Lilian Baylis Studio by going through the grey double doors opposite the café counter.

For step-free access to the Lilian Baylis Studio, you will need to use the lift at Stage Door. Please ask the Receptionist for directions.

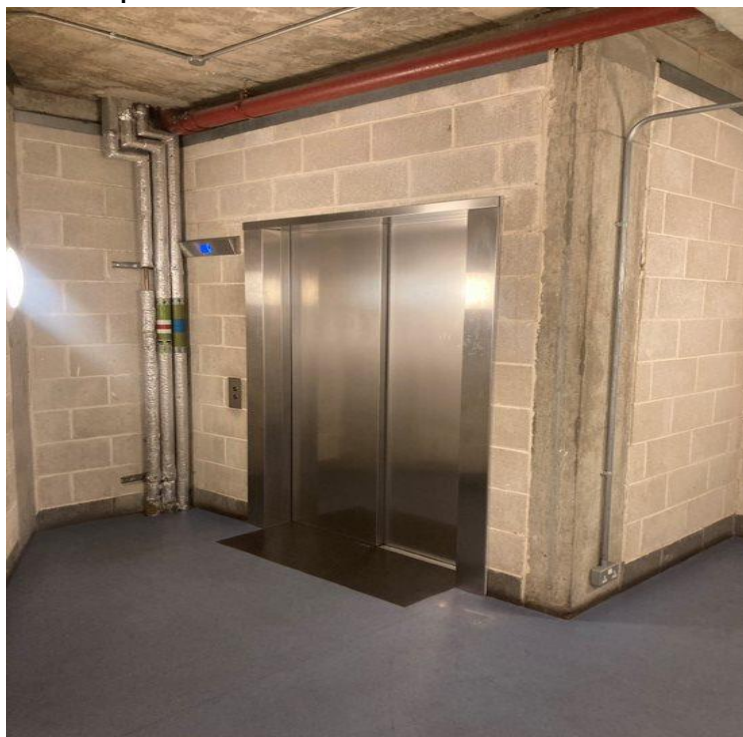


Image description: A silver lift with double doors. The lift sits within concrete walls with exposed concrete bricks and a grey/blue floor.

When you get into the lift, press the button marked **LB** for Lilian Baylis Stage. There is a guide next to the buttons to direct you, which you can also see below. If you have any issues with pressing the buttons, a member of staff will be available to assist.



Level	
5	Gillian Lynne Studio - Studio C
3	Leslie Edwards Studio - Studio B
2	Frederick Ashton Studio - Studio A Dressing Rooms 2.1 to 2.4 Wardrobes & Laundry Visiting Company & Production Offices
1	Dressing Rooms 1.1 to 1.7
G	STAGE DOOR RECEPTION & EXIT Garden Court Café Lilian Baylis Auditorium
S	Sadler's Wells Stage
LB	Lilian Baylis Stage Dressing Rooms LB1 to LB3 LBS Wardrobe
SB	Dressing Rooms B1 to B4 Orchestra Pit

Image description (LEFT): Photograph of a list of buttons that are inside the lift. The button labelled **LB** is lit up in red to show that it has been selected.

Image description (RIGHT): Poster guide to all spaces accessible via the back of house lift, and the floor numbers they are on.

When you get out of the lift go through the open door to access the Back of House corridor in the Lilian Baylis Studio. You will then turn left at the next door and access the Lilian Baylis Studio from the Stage Right wing.



Image description: An open black door that leads into the Stage Right wing. The floor is black and there are standing lights in the back half of the image beside large black curtains.



Image description: A large dance studio theatre with black floor in the front half of the space and a wooden floor in the back half. The seats are retracted to sit against the back wall with one line of seating available in the front row. There are stairs on either side that lead out of the venue. The studio is lit with long bright strip lights that extend overhead in the lighting grid.

The Lilian Baylis Studio is a studio theatre that is used for both rehearsal and performance. The seating bank in the theatre can be pushed back to give an even bigger floor space for rehearsals measuring nearly 15m x 15m, with:

- No natural daylight. The lighting comes from two independent sets of working strip lights at different heights, which can be used together or

separately. These lights can sometimes feel bright. You may want to bring sunglasses or similar if you are light sensitive.

- Sprung wooden floor covered with black Harlequin marley. Please note, outdoor shoes should not be worn on the dance floor.
- A rehearsal sound system where you can connect your music through your own device. Please bring an aux adapter if you require one.
- Heating and air conditioning centrally controlled via Stage Door. This means that when adjusted, the temperature will not change immediately. We recommend that you bring layers when working in the studios.
- Please note, there are no mirrors or barres.

To get to the changing rooms, gender-neutral toilet and accessible toilet and shower from the Lilian Baylis Studio, go through the door in the Stage Right wing, straight across the corridor through the next door.

The backstage doors are quite heavy so please let a member of staff know if you need help.



Image description: A grey door beside a white wall with a wheelchair and shower symbol on the door. To the left of the image there are a stack of dark blue coloured chairs.

The Studios

After signing-in at Stage Door, the Stage Door Receptionist will direct you to the lift to the studio where you will be working.



Level	
5	Gillian Lynne Studio - Studio C
3	Leslie Edwards Studio - Studio B
2	Frederick Ashton Studio - Studio A Dressing Rooms 2.1 to 2.4 Wardrobes & Laundry Visiting Company & Production Offices
1	Dressing Rooms 1.1 to 1.7
G	STAGE DOOR RECEPTION & EXIT Garden Court Café Lilian Baylis Auditorium
S	Sadler's Wells Stage
LB	Lilian Baylis Stage Dressing Rooms LB1 to LB3 LBS Wardrobe
SB	Dressing Rooms B1 to B4 Orchestra Pit

Image description (LEFT): A silver lift with double doors. The lift sits within concrete walls with exposed concrete bricks and a blue/grey floor.

Image description (RIGHT): Graphic design poster of a guide to all rooms that are accessible via this back of house lift and the floors in which they are on.

STUDIO B

Studio B is also called the Leslie Edwards Studio and is on Level 3.

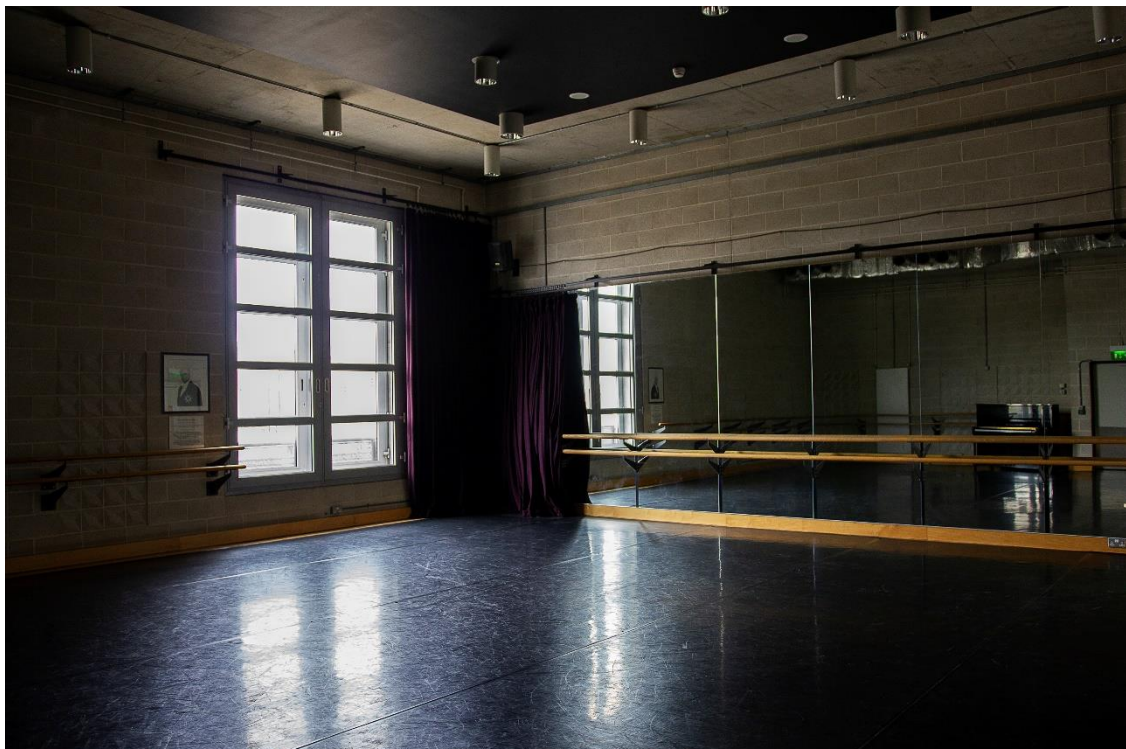


Image description: A large dance studio with a black floor. There is a large window on the left side with natural light coming in. The wall straight ahead is covered in a large mirror which can be covered by curtains. Ballet barres extend across the whole room. An upright piano can be seen in the mirror.

Studio B is 11.5m x 10m with a total floor area of 115m² containing:

- Natural daylight from one large rectangular window that you can see out of with a curtain should you wish to make it darker.
- Lighting controlled on a dimmer meaning you can make it brighter and darker when you need.
- Full length mirrors covering one wall with curtains so you can cover the mirrors if you need to.
- Ballet barres on all sides.
- Sprung wooden floor covered with black Harlequin marley. Please note, outdoor shoes should not be worn on the studio floor.
- Two small changing rooms with direct access from the studio.
- A large wall-mounted television.
- A sound system where you can connect your music through your own device. Please bring an aux adapter if you require one.
- An upright piano.
- Heating and air conditioning centrally controlled via Stage Door. This means that when adjusted, the temperature will not change immediately. We recommend that you bring layers when working in the studios.

The closest toilets to Studio B are on Level 2; one level below accessible by either the stairs or the lift. There is a gender-neutral toilet and accessible toilet with a shower opposite Dressing Room 2.3.

STUDIO C

Studio C is also called the Gillian Lynne Studio and is on Level 5.



Image description: A large bright dance studio with a black floor. All walls in the image are covered with mirrors and ballet barres. Natural light is coming through the windows over the mirrors.

Studio C is 11.5m x 10m with a total floor area of 115m² containing:

- Natural daylight from two rectangular windows high up with a curtain should you wish to make it darker.
- Lighting controlled on a dimmer meaning you can make it brighter and darker when you need.
- Full length mirrors covering two walls with curtains so you can cover the mirrors if you need to.
- Ballet barres on all sides.
- Sprung wooden floor covered with black Harlequin marley. Please note, outdoor shoes should not be worn on the studio floor.
- Two small changing rooms with direct access from the studio.
- A large wall-mounted television.
- A sound system where you can connect your music through your own device. Please bring an aux adapter if you require one.
- An upright piano.
- Heating and air conditioning centrally controlled via Stage Door. This means that when adjusted, the temperature will not change immediately. We recommend that you bring layers when working in the studios.

The closest toilets to Studio C are through the door at the back of the studio. Here you will find an accessible toilet with shower and a gender-neutral toilet.



Image description (LEFT): A grey door that is next to a concrete wall with exposed concrete bricks. There is a wheelchair and shower symbol on the door. A square silver button is on the wall on the right side which can be pressed to enter the toilet.

Image description (RIGHT): A grey door with a man and woman symbol on it that opens into a white toilet room. The room is quite small and has a silver bin on the wall.

Chill-Out Rooms & Safer Spaces

We can provide a **Chill-Out Room** if you need one. This is a separate quiet space where we can provide the following:

- Bean bags.
- Cushions.
- Yoga mat.
- Lamps so you can adjust the lighting.

Please note, Sadler's Wells is a busy building with lots of activity. We cannot always guarantee that the Chill-Out Room will be close to the studio you are working in.

Safer Spaces

Sadler's Wells is a non-smoking venue and smoking is not permitted anywhere on the premises. Anyone wishing to smoke may do so outside the Stage Door Reception entrance.

The consumption of alcohol whilst working or in backstage areas is also strictly prohibited.

We are committed to ensuring that Sadler's Wells is a place where creativity and diversity are supported and celebrated, where everyone is treated fairly and where staff, artists, and audiences can express their identities free from the threat of intimidation or discrimination.

We have a zero-tolerance policy to any form of unfair treatment, bullying, harassment, oppressive, non-inclusive, and discriminatory behaviour in any of our spaces. These behaviours are unacceptable and will be challenged.

If you feel unsafe, experience, or witness any unwanted or inappropriate behaviour from someone in our spaces, please raise this with the Artist Development team at Artist.Development@sadlerswells.com. You can also call a member of the People Team on 020 7863 8255. If you prefer to report this anonymously, leave your comments in a sealed envelope at Stage Door Reception for the attention of the People team. You can also contact us for guidance on Whistleblowing if you need to disclose serious wrongful behaviour.

Thank you for taking the time to read this Care Guide and if you have any questions, please contact the team by e-mail at Artist.Development@sadlerswells.com.