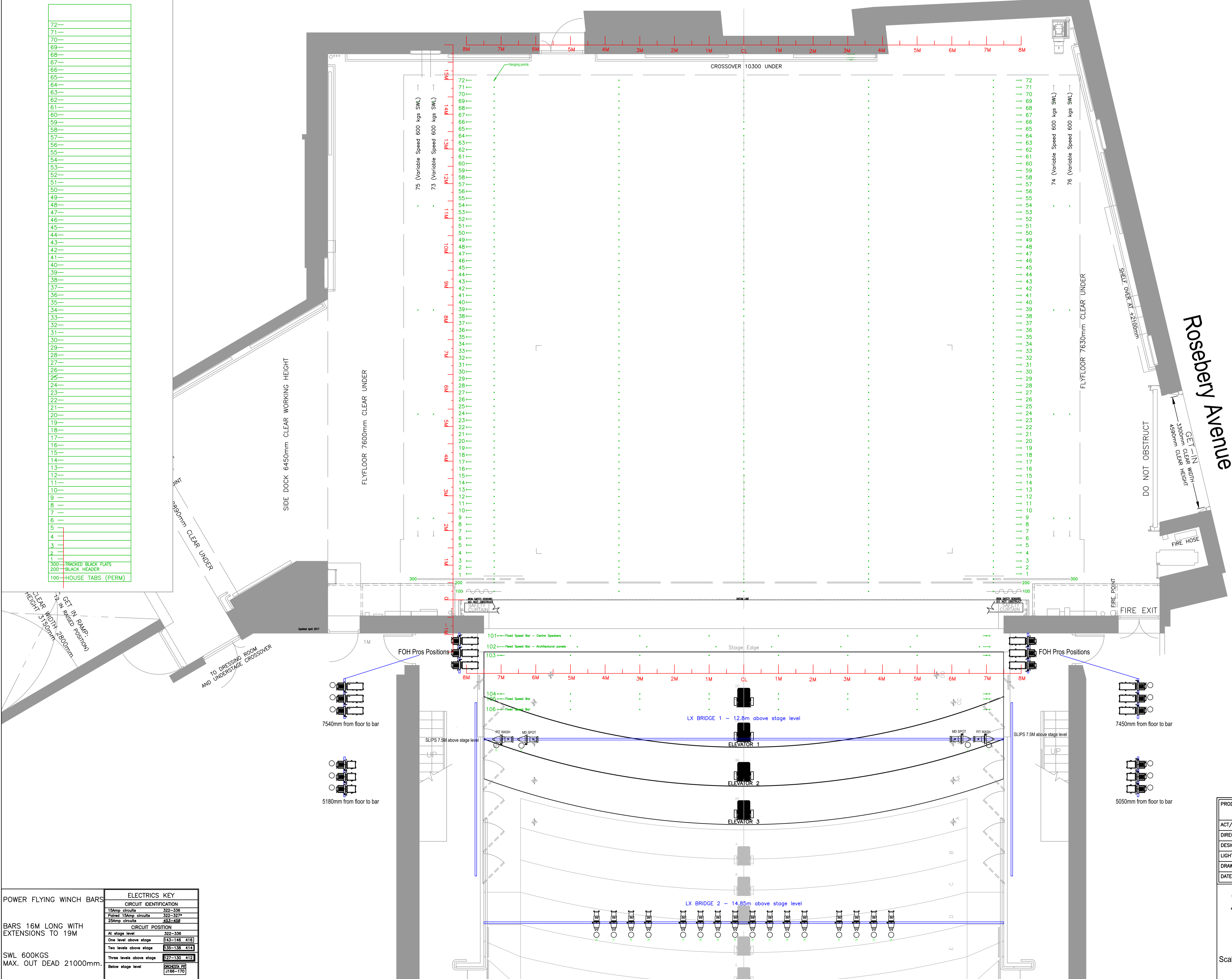


72	
71	
70	
69	
68	
67	
66	
65	
64	
63	
62	
61	
60	
59	
58	
57	
56	
55	
54	
53	
52	
51	
50	
49	
48	
47	
46	
45	
44	
43	
42	
41	
40	
39	
38	
37	
36	
35	
34	
33	
32	
31	
30	
29	
28	
27	
26	
25	
24	
23	
22	
21	
20	
19	
18	
17	
16	
15	
14	
13	
12	
11	
10	
9	
8	
7	
6	
5	
4	
3	
2	
1	
0	
300	TRACKED BLACK FLATS
200	BLACK HEADER
100	HOUSE TABS (PERM)

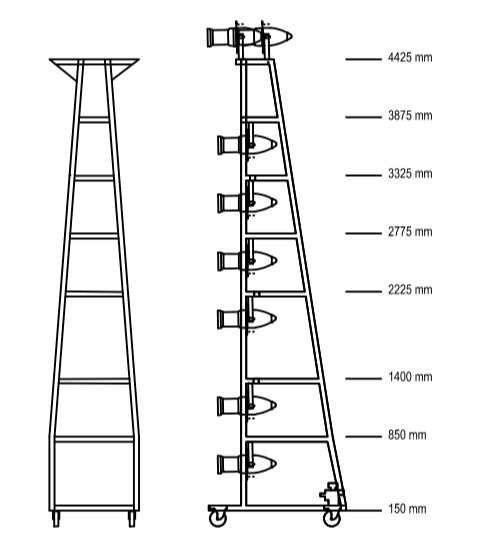


POWER FLYING WINCH BARS	
BARS 16M LONG WITH EXTENSIONS TO 19M	SWL 600KGS MAX. OUT DEAD 21000mm.
ELECTRICS KEY	
CIRCUIT IDENTIFICATION	
15amp circuits	322-336
Paired 15amp circuits	322-327*
25amp circuits	483-486
CIRCUIT POSITION	
At stage level	322-336
One level above stage	143-146 418
Two levels above stage	135-136 414
Three levels above stage	127-130 412
Below stage level	3165-3170

All lighting stock in addition to FOH lighting as indicated on plan

SWT LX Symbols	Stock
	ETC Source 4 750w (105 bodies) 20 x 14 deg lenses 50 x 19 deg lenses 60 x 26 deg lenses 50 x 36 deg lenses 30 x 50 deg lenses (including FOH stock)
	Source 4 LED Series 2 Lustr (30) Compatible lenses above
	Robert Juliat 611Sx 11'-26" (24) (including FOH stock)
	Robert Juliat 613Sx 28"-54" (24) (including FOH stock)
	Robert Juliat 310 1.2kw Fresnels (8'-53") (50)
	Robert Juliat 329 2.5kw PC (7'-49") (30)
	Arri 2.5k HMI Fresnel (2)
	Strand Pollux 5kw (2)
	Strand Bambino 5kw (4)
	Robert Juliat CIN'K 350 LFV 5kW (2)
	Par64 1kW (70)
	Par20 240v (10' Spot) (40)
	GLP Impression X4 Bar 20 (16)
	Source 4 LED CYC Series 2 Lustr (22)
	Selecon Flood (8)

All SWT Symbols are Dynamic blocks with visibility states.



PRODUCTION		
ACT/SCENE		
DIRECTED		
DESIGNED		
LIGHTING		
DRAWN BY	PLAN NO.	NO. OF PLANS
DATE	REVISION	

**Sadler's Wells**  
Rosebery Avenue London EC1R 4TN

**STAGE PLAN**  
Refer to layer key at left for information included

Scale: 1/50 at A1